



# Ohm-Stat™ CT-8900

## Combination Tester with Software

# Fast, Foolproof & Saves!

Provides complete sortable reports for supervisors and ISO audits. No more log books!

*Test each foot and wrist simultaneously and individually in one test.*

*Use a magnetic stripe, bar code, or proximity reader to test, record, and print or email data for up to 5,000 employees.*

*Exception report will inform if worker did not test once or twice a day.*

### Identify



Scan using keyboard, barcode, or mag stripe, HID™, CASI-RUSCO™, MOTOROLA™, or AWID proximity reader.

### Press

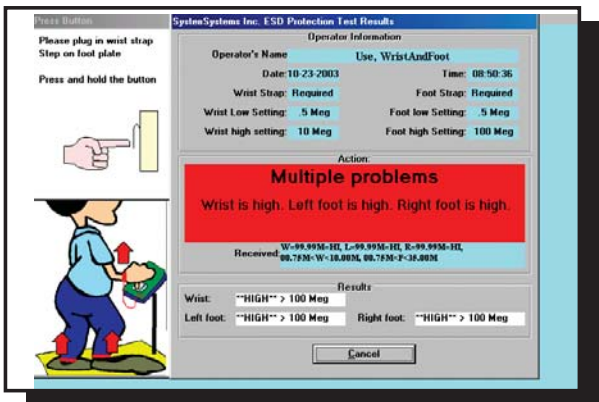


Attach wrist strap, step on dual plate and press metal button.

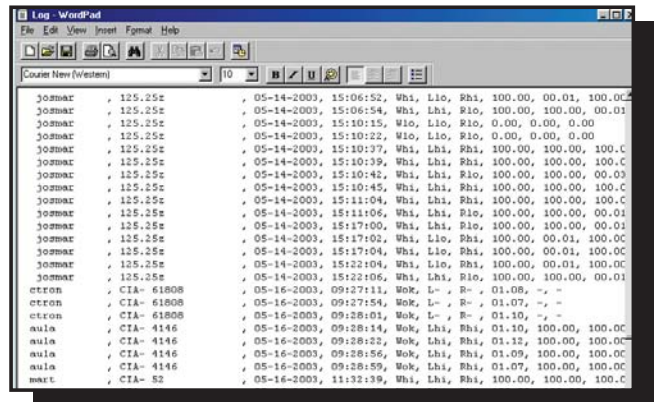
### Pass, Fail, or Retest



Employee passes or fails. Supervisor analyzes data and reads exception reports or email.



Sample test data screen



Sortable report / Email capable

## Description

User friendly, precision engineered combination tester with a full year warranty.

The CT-8900 measures the electrical resistance of each foot and wrist strap simultaneously and individually, enters the data automatically, then prints reports or sends email.

When used with a computer and leading edge software the employee's test results are stored in the computer and then can be emailed to supervisors. NO MORE LOG BOOKS. These reports and data can help conform your company to EDS 20/20 specifications or ISO standards. Speed up testing, and eliminate no tests.



Adjustable limits. Test each foot and wrist individually and simultaneously

## CT-8900 Combo Tester and Software Properties/Benefits

- ISO -9000 conformance- no more log books
- Results automatically entered into computer
- Exact resistances displayed on LED, screen, and buzzer
- Tests performed at 19 volts – not competitive 9 volts
- Available with heavy duty stand or wall attachment
- Works with bar code, mag stripe, keyboard, HID™, CASI-RUSCO™, AWID™ proximity readers
- Conforms to both US and European specifications
- AC -120 volts, 220 volts or DC -9 volt battery operated
- Made in the U.S.A.
- Value priced
- Can test unrequired straps or cords
- Works with all Windows® compatible computers
- Cables can be USB (with adapter accessory), RS-232 serial (enclosed), or wireless transmitted (accessory)
- Can open doors or print labels as an upgrade
- Adjustable US and European limits
- CE mark listed
- Automatically stores results for 5000 employees
- Generates following reports: Monthly, daily results, exception reports of people who did not test once or twice, or failed when tested, certification due dates
- Supervisor can select specific work groups
- Reports and data can be exported to Excel® or Access®
- Password protected- two levels
- All software compatible Windows® 95, 98, Me, 2000, and XP
- Capable of local network integration.
- Automatic software updates
- Automatic email software
- Special software available
- Foreign language capability

## Specifications:

Dimensions	4.0 in. wide x 7.5 in. long x 1.5 in. thick (9.5 cm x 15.24 cm x 3.8 cm)
Weight	10 ozs. (.284 kg)
Power Supply	9 volt battery (IEC6F22) or 12 volt DC adapter
Test Voltage	19 volts DC +/- (open circuit)
Accuracy	+/- 10%
Resistance Ranges	Wrist Strap: Low: 500k, 750k ohms; High: 2M, 5M, 10M, 25k, 35k, 50k, 75k, 100k, (1000M-Optional) Heel/Toe/Shoe: Low: 500k, 750k ohms; High: 2M, 5M, 10M, 25M, 75M, 100M, (1000M-Optional) Internally selectable
Foot Plate	Dimensions: 15.75 in. x 15.75 in pad (40 cm x 40 cm) featuring two 6 in. x 14 in. stainless steel plates (15.2 cm x 35.6 cm), dual path. Weight: 2.2 lbs. (1 kg.)
Wall Mounting	Hook and loop high strength discs and strips
Display	Red and green LEDs, high dB buzzer, computer monitor (optional)
Features	Dual path foot plate, toggle switch selector, RS-232 computer interface, NIST/CECC limits, micro-processor controlled. Made in U.S.A. High accuracy
Environment	32° - 100° F (0° - 37° C) : 0% - 85% RH

**DISTRIBUTED BY:**